

EXTRA HEAVY DUTY KNITTED SHADECLOTH

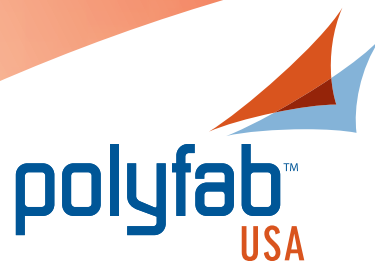


Architec 400[®]



Main image:
SUNAMI™ Shade Structure® - 1997 Tensile Shade Products, LLC
Manufactured and sold exclusively by Tensile Shade Products, LLC

Architec 400[®] utilizes the Ovalon™ monofilament yarn and is UV stabilized to maintain its strength and flexibility under the harshest Australian sun.



Architec 400®

EXTRA HEAVY DUTY
KNITTED SHADECLOTH



Architec 400® is tough under the sun

Architec 400® is a 400 gsm High Density Polyethylene (HDPE) fabric with an excellent weight to strength ratio. It has very good tensile strength and is extremely resistant to tearing.

Architec 400® incorporates the latest in ultra violet stabilizers from CIBA Specialty Products. These new generation stabilizers extend the UV life of the fabric so that Polyfab USA can now offer a 12 year warranty – the best industry warranty available (conditions apply). These new UV stabilizers also provide improved color consistency and colorfastness.

Introducing Ovalon™ our propriety monofilament yarn

Architec 400® contains no flat tape.

Instead it is made from a combination of monofilament yarn and our new **Ovalon™** monofilament yarn.

Ovalon™ provides excellent strength and has minimal stretch in both the Weft and Warp direction of the stitch pattern and will maintain its tension. It also provides very high UV protection of 90% and over.

With Ovalon™ you get the strength of monofilament yarns combined with the UV protection of tape.

Architec 400® is good under tension

Shade sails using Architec 400® should be well designed and engineered to hold the fabric under the tension it deserves.

The fabric should be supported by using appropriate strength poles and footings as determined by a professional engineer, and fabricated and installed by a qualified contractor in accordance with local building codes.

Architec 400® is easy to work with

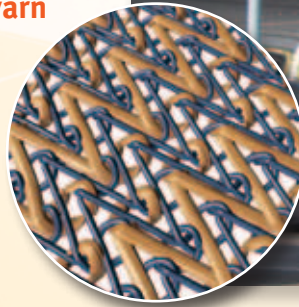
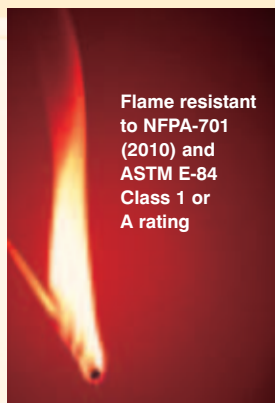
Architec 400® has been pre-stented to reduce shrinkage and improve the stability of the fabric. This process improves the workability of the fabric during the fabrication and installation of the shade sails or shade structure.

Technical Specifications		WARP	WEFT
Breaking Force	lbf / 2 inch	231	426
Breaking Extension	%	89.1	92.6
Tear Resistance (Wing Tear)	lbf	73	74
Bursting Force (Steel Ball)	Mean lbf		643
Bursting Pressure	Mean PSI		653

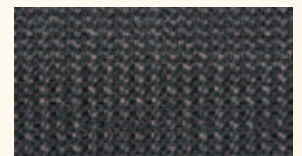
Available in: 12.5 feet (width) x 164 feet (length) Straight rolls (not folded)
Average weight: 12 oz. per square yard

Manufacturer reserves the right to modify specifications or colors without notice.
All specification tolerances +/- 5%.

Colors	UVR%	Mean UPF (Visual Light)%	Shade Factor
Grape (NEW)	90	14	82
Lime (NEW)	94	20	87
Lemon (NEW)	95	25	76
Berry (NEW)	95	30	89
Orange (NEW)	94	24	82
Aquamarine	94	22	91
Black	96	48	96
Cappuccino	95	25	86
Midnight Green	95	28	92
Navy Blue	96	34	95
Porcelain	90	12	66
Slate Grey	88	10	84



Grape



Black



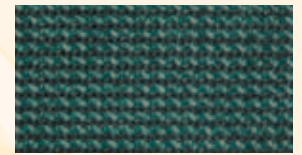
Lime



Cappuccino



Lemon



Midnight Green



Berry



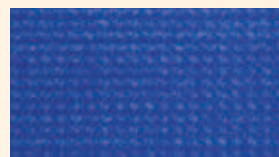
Navy Blue



Orange



Porcelain



Aquamarine



Slate Grey

Note that actual colors may vary slightly from those shown.

Distributed by:

Polyfab shade cloth has excellent fade resistance but all outdoor fabrics are subject to gradual fading over time.

Some colors have a tendency to fade more than others.



www.PolyfabUSA.com